



Ministry of Housing,
Communities &
Local Government

PropTech Innovation Challenge

Information Webinar – 9th April 2025



Background

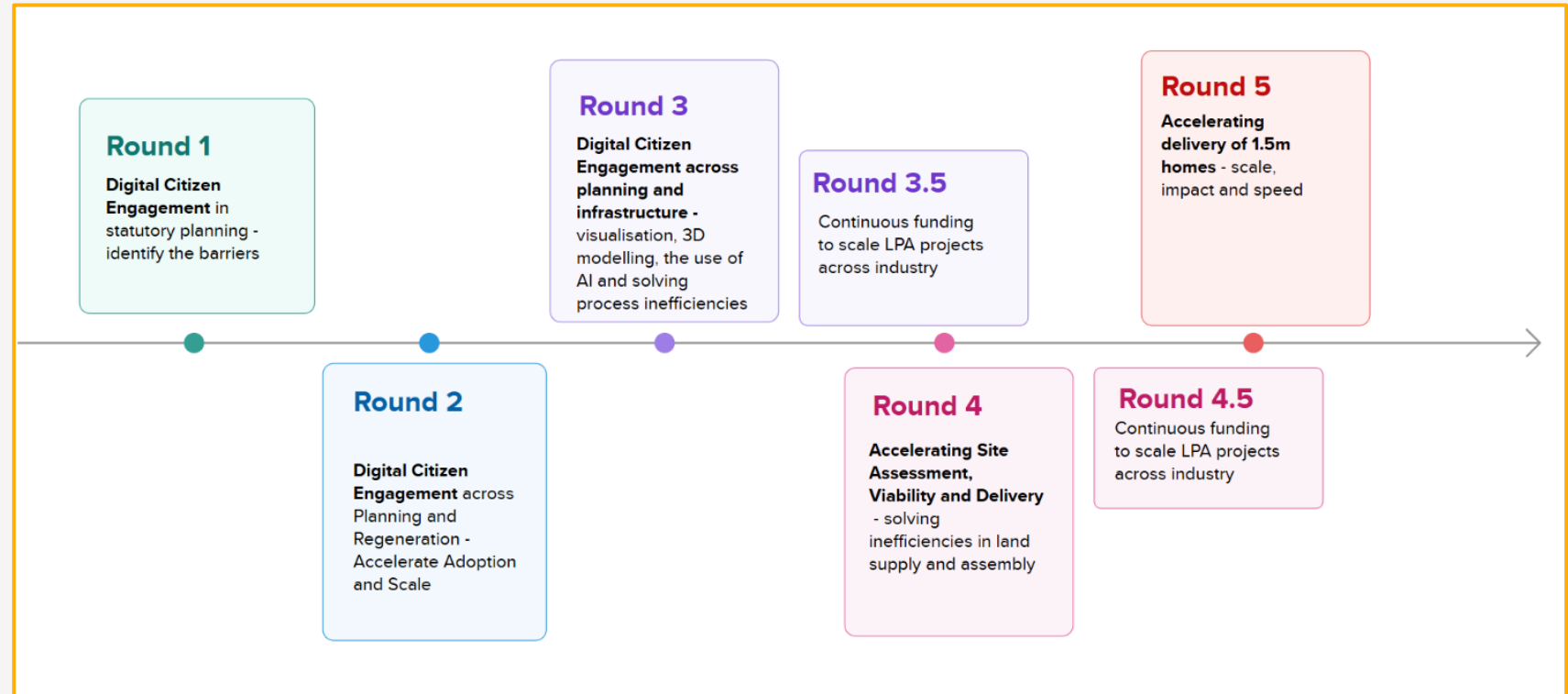
Geovation, in collaboration with the Ministry of Housing, Government and Local Communities (MHCLG), has launched a £1.2 million PropTech Innovation Challenge to **accelerate the delivery of 1.5 million homes**



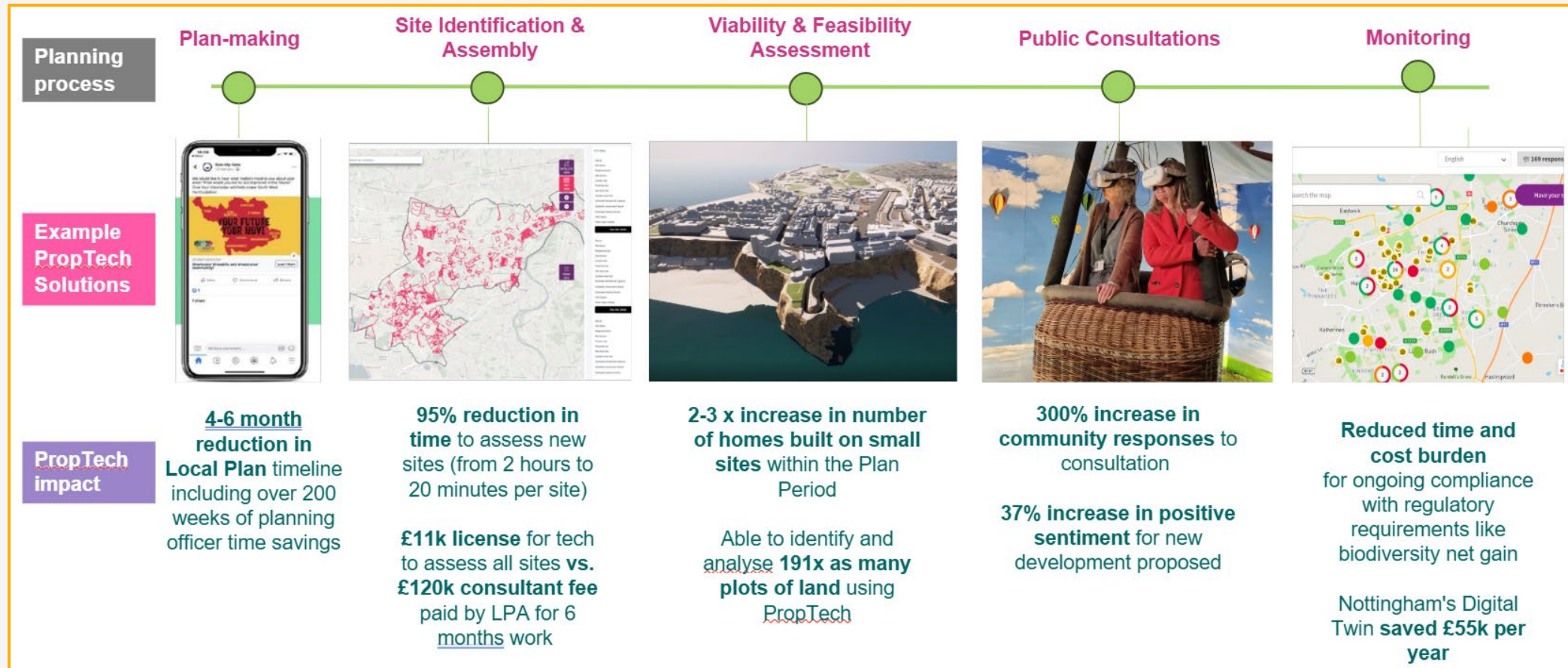
The PropTech Innovation Fund to date...

- 114 Pilots
- 77 LPAs
- 59 Tech companies
- 10 universities
- £14.8m in funding

And counting...



PropTech's potential across the housing lifecycle



Our Challenge aims



Develop scalable solutions

Create genuinely scaleable solutions that deliver real-time housing delivery gains and can be tested on live sites



Accelerate PropTech market adoption

Promote the use of PropTech by case for change and the need for accelerated market adoption to support housing delivery



Support digital planning objectives

Build the foundations for a modern, 21st-century planning system by leveraging and building on digital tools and data



Our Challenge aims



Encourage co-design & collaboration

Foster lasting partnerships between PropTech companies, industry and public sector organisations to ensure solutions meet multiple user needs



Increase tech market capacity

Enhance the UK PropTech market's ability to engage with government and respond to urgent housing and land challenges with advanced technologies



What we are looking for



Innovative Solutions: Develop creative digital and data solutions that accelerate the delivery of new homes.



Speed and Scale: Rapidly build solutions that can be scaled easily and efficiently across a range of customers and contexts.



Collaboration: Commit to working closely with local government, industry and policy teams to co-design solutions informed by user needs.



Problem Solving: Clearly address one of the priority problem statements formulated for the challenge and remain focused on this.



Long term sustainability: Ensure solutions create legacy and can be sustained by their users in the long-term.



Market Awareness and Interoperability: Ensure solutions build on and link into existing market capability and data availability.



Efficiency: Find opportunities to streamline planning and housing processes to unblock and accelerate housing delivery.



Quantifiable Evidence: Commit to working with us to measure and monitor the benefits of your solution, tested in live environments



How many? How much? How long?

Up to 12 companies of any size will share a pot of £1.2 million to develop their solutions by February 2026

Up to **12**
Companies

£1.2m
Funding



Eligibility



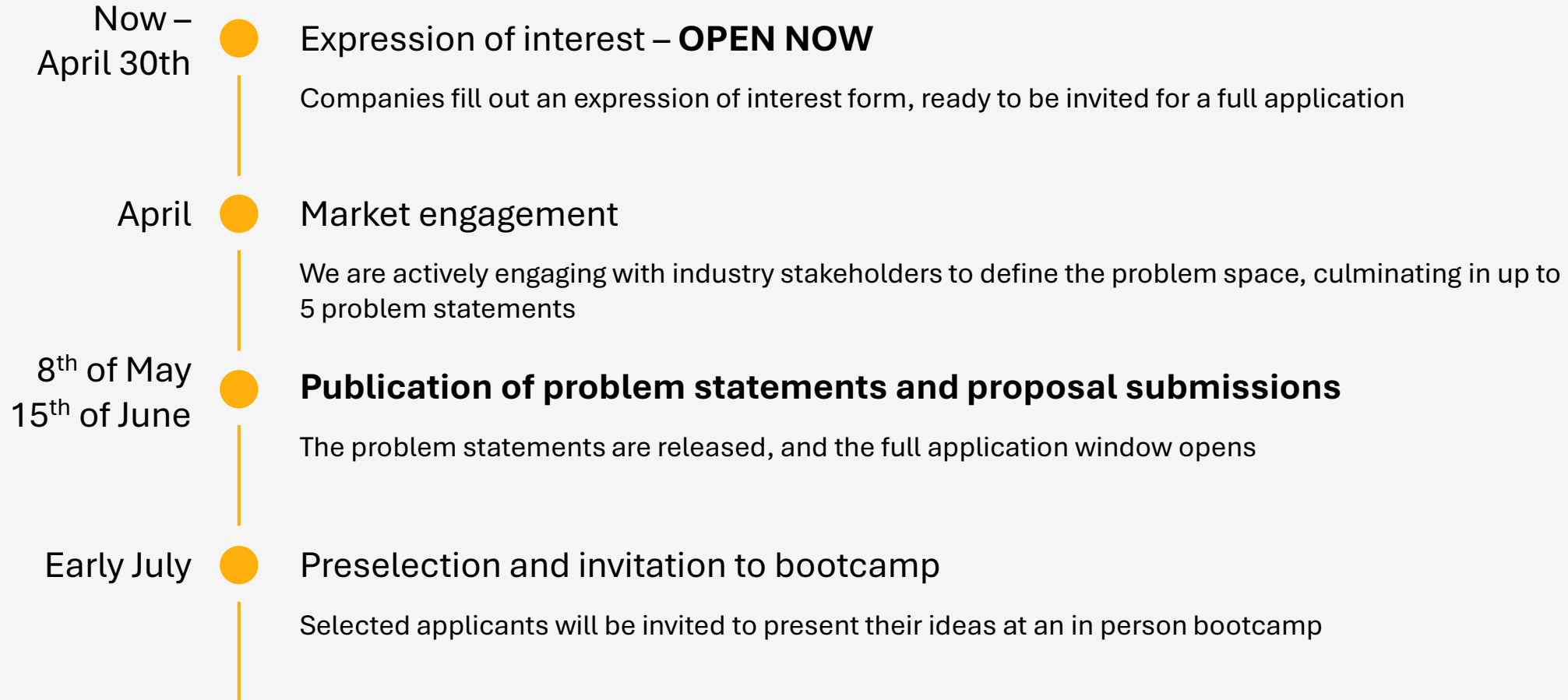
UK-registered companies only

There is no restriction on the size, scale and remit for successful companies.

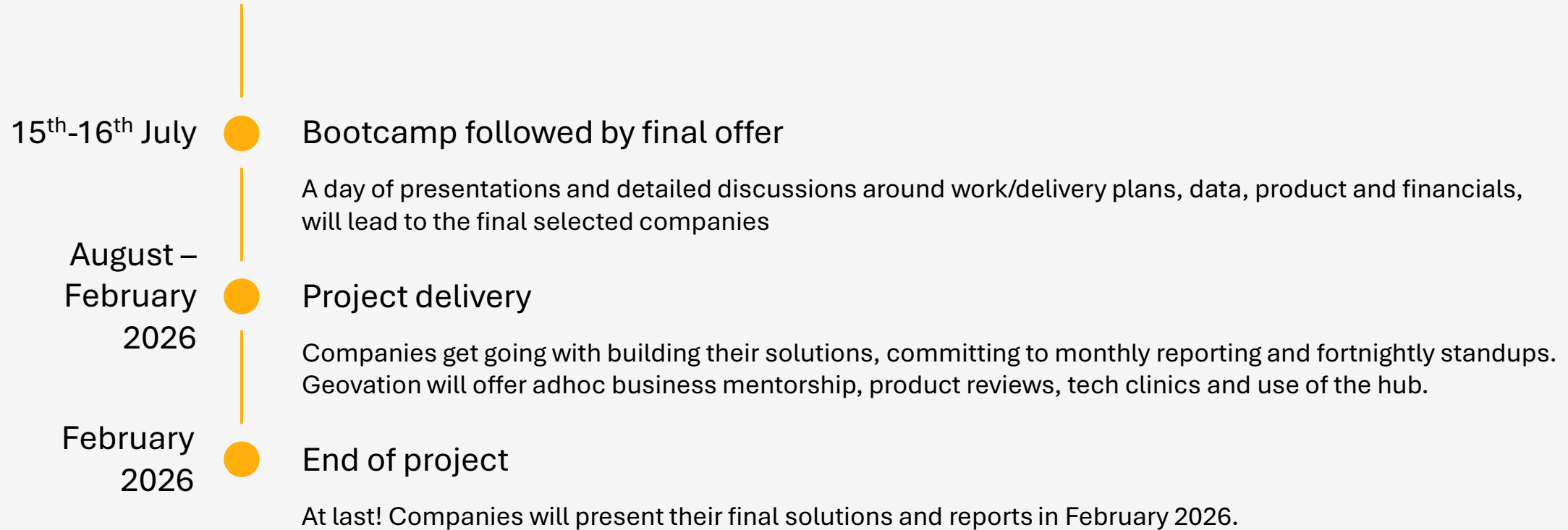
We actively encourage joint applications with local planning authorities, industry partners or housing developers.



The Process



The Process



Where we're at today

We have recently made a public announcement and opened a EOI form.

We now aim to gather market research as we narrow down problem statements in preparation for full applications...



Interested?



[www.geovation.uk
/challenges
/proptech-innovation-challenge](http://www.geovation.uk/challenges/proptech-innovation-challenge)



Any questions?

